



Town Clerk

____ Town Clerk

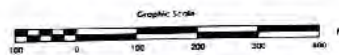
4023

- [illegible]

1. The first step is to identify the problem.
 2. The second step is to define the problem.
 3. The third step is to analyze the problem.
 4. The fourth step is to develop a solution.
 5. The fifth step is to implement the solution.
 6. The sixth step is to evaluate the solution.
 7. The seventh step is to monitor the solution.
 8. The eighth step is to maintain the solution.
 9. The ninth step is to improve the solution.
 10. The tenth step is to document the solution.

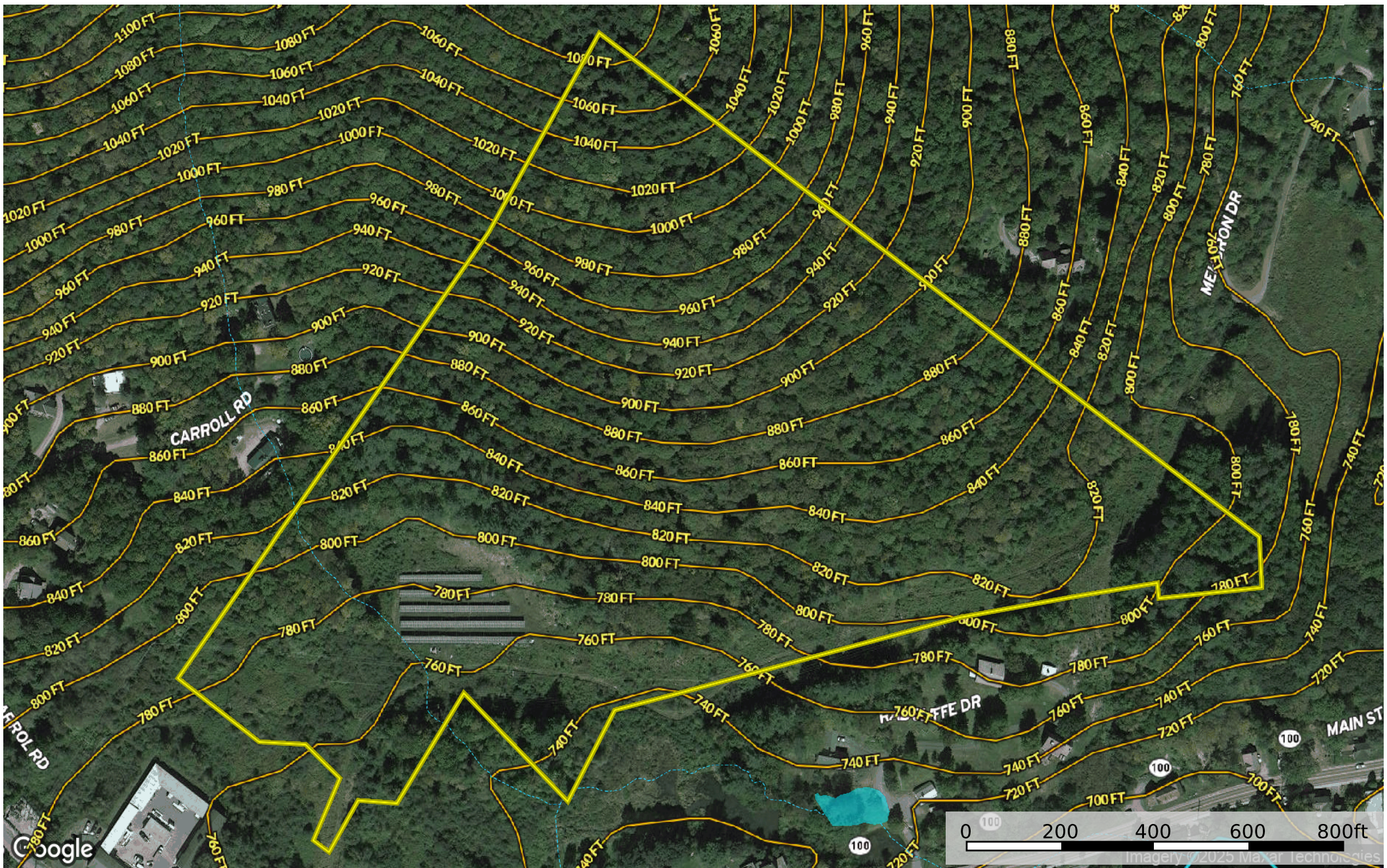


C1-01



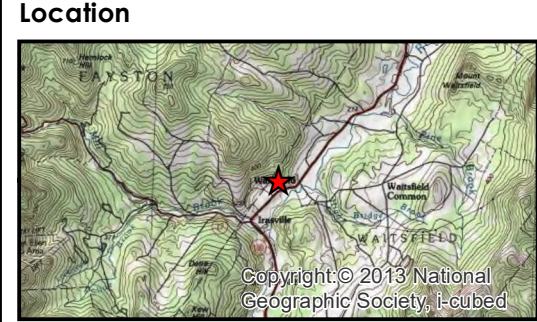
Inventory #	Q	Quantity	Date
-------------	---	----------	------

Waitsfield, VT - 38.59+/- Acres - 80 Carroll Rd
Washington County, Vermont, 38.59 AC +/-



- Property Boundary
- Stream, Intermittent
- River/Creek
- Water Body

Soil Key	Soil Description	Ag Value	Prime Ag	Hydric	Hydrogroup	On Site	Kw
17C	Cabot silt loam, 8 to 15 percent slopes	7	Statewide (b)	Y	D	IIId	0.43
39B	Colton gravelly loamy sand, 3 to 8 percent slopes	6	Statewide	N	A	Ia	0.05
39D	Colton gravelly loamy sand, 15 to 25 percent slopes	10	NPSL	N	A	Ib	0.05
44C	Lamoine silt loam, 8 to 15 percent slopes	7	Statewide	N	C/D	IIId	0.37
58A	Grange silt loam, 0 to 3 percent slopes	3	Prime (b)	Y	B/D	IVa	0.43
72D	Tunbridge-Lyman complex, 15 to 35 percent slopes, v ery rocky	10	NPSL	N	C	IIId	0.37
77D	Peru fine sandy loam, 15 to 25 percent slopes	8	NPSL	N	C/D	IIId	0.37



- Legend
- Project Parcel (39.5 ac)
 - Old Well
 - Logging Road/VAST Trail
 - Intermittent Stream
 - Soil Boring
 - Wetland Points
 - Sample Points
 - TCE Wetland Delineation 2019 (0.52 ac)
 - Class II
 - Class III
 - Class II Wetland Buffer
 - NRCS Hydric Soil
 - VHD Stream
 - Contour (2')

The Wetland Delineation shown on this plan was performed on 09/19/2019 according to the standards of the 1987 US Army Corps of Engineers and the 2012 Regional Supplement. This delineation was performed by Karina Dailey, P.W.S. and Brittany LeBeau.

Sources: Aerial Imagery by VCGI (2018); Streams by VHD (2013); Project Area by TCE (2019); VT E911 Roads (2019); VT Significant Wetland by ANR (2015); Soils by NRCS (2018); Contours by VCGI & CCRPC (Various dates); Tax Parcel Boundary compiled by VCGI; All other layers by TCE (2015, 2019).

Disclaimer: The accuracy of information presented is determined by its sources. TCE is not responsible for any errors or omissions that may exist. Questions of on-the-ground location can be resolved by site inspections and/or surveys by a registered surveyor. This map is not a replacement for surveyed information or engineering studies.

Lamonia
Carroll Road
Waitsfield, VT

Wetland Delineation Map

Project: 18-224
Prepared By: BJL
09/19/2019
1 inch = 200 feet

