

9-2

1700
280.00 AC.

1800
55.61 AC.

CS 9299
CS 11325

CS 22966

CS 11303

7

CS 6596

8

2204
10.00 AC.

2205
10.00 AC.

4200
32.50 AC.

3700
40.00 AC.

CS 11289
CS 22966

3600
110.65 AC.

ELK

CREEK

LAKE

CS 11302

3100
390.00 AC.

18

CS 11288

CS 22966

3200
80.00 AC.



16

3

4100
118.49 AC.

17

(PROPOSED)

CS 9635

22

9-2

4500
1713.67 AC.

5200
480.00 AC.

CS 11301

RELOCATION
CREEK

20

21

19

CS 11247

CS 11248

3 11166

ELK

ELK
CR. DAM

(PROPOSED)

S89°38'W 80.30 CH.

CS 9503

ELK

CS 22966

8200
320.00 AC.

8104
20.00 AC.

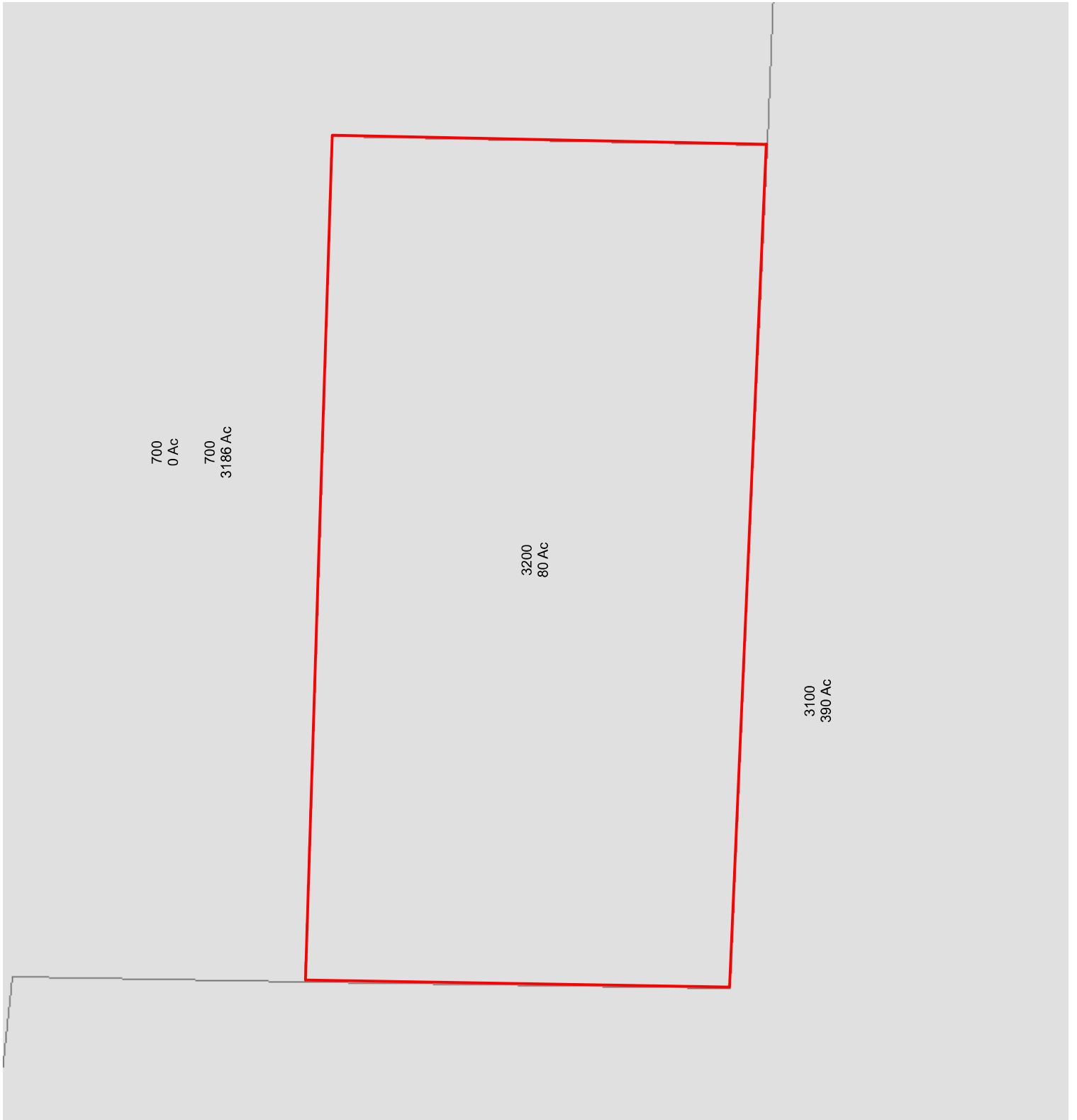
30

29



First American Title

10217911
Elk Cr Rd
Trail, OR 97541



Taxlot



Subject



Taxlot

5/28/2024

First American Title Insurance Company makes no express or implied warranty respecting the information presented and assumes no responsibility for errors or omissions. FIRST AMERICAN, the Eagle logo, and FIRST AMERICAN TITLE INSURANCE COMPANY are trademarks owned by First American Financial Corporation. Information is provided by Home Junction, <https://www.homejunction.com/>. School information is copyrighted and provided by GreatSchools.org, <https://www.greatschools.org>.



First American Title

10217911
Elk Cr Rd
Trail, OR 97541



Aerial



Subject



Taxlot

5 / 28 / 2024

First American Title Insurance Company makes no express or implied warranty respecting the information presented and assumes no responsibility for errors or omissions. FIRST AMERICAN, the Eagle logo, and FIRST AMERICAN TITLE INSURANCE COMPANY are trademarks owned by First American Financial Corporation. Information is provided by Home Junction, <https://www.homejunction.com/> School information is copyrighted and provided by GreatSchools.org, <https://www.greatschools.org>



First American Title

10217911
Elk Cr Rd
Trail, OR 97541



Aerial



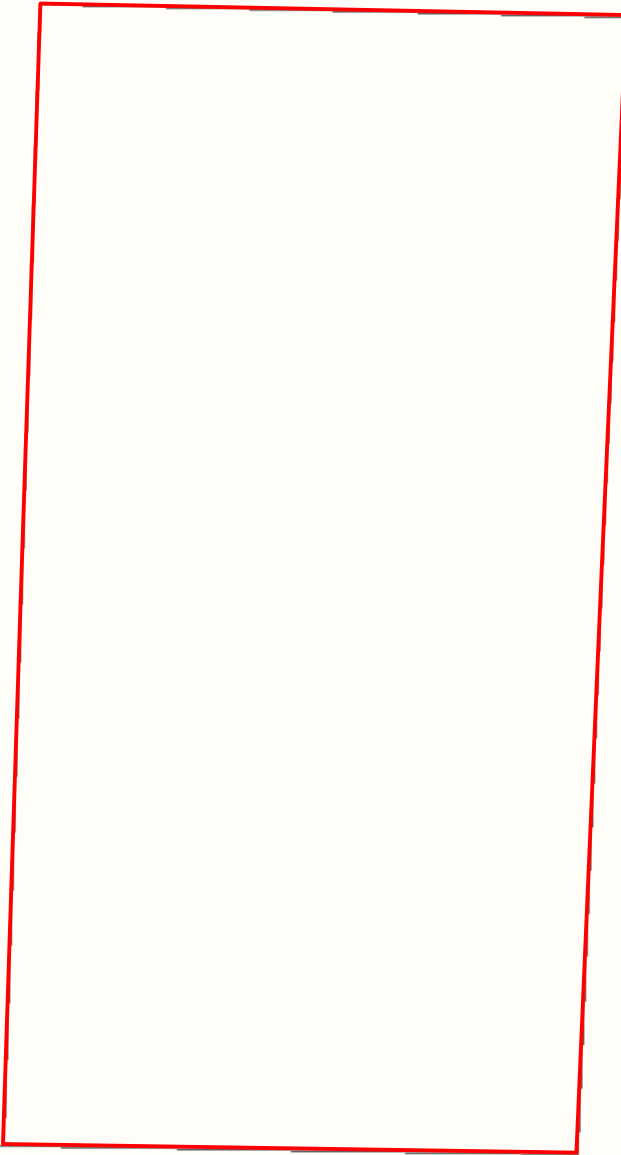
Subject



Taxlot

5/28/2024

First American Title Insurance Company makes no express or implied warranty respecting the information presented and assumes no responsibility for errors or omissions. FIRST AMERICAN, the Eagle logo, and FIRST AMERICAN TITLE INSURANCE COMPANY are trademarks owned by First American Financial Corporation. Information is provided by Home Junction, <https://www.homejunction.com/> School information is copyrighted and provided by GreatSchools.org, <https://www.greatschools.org>



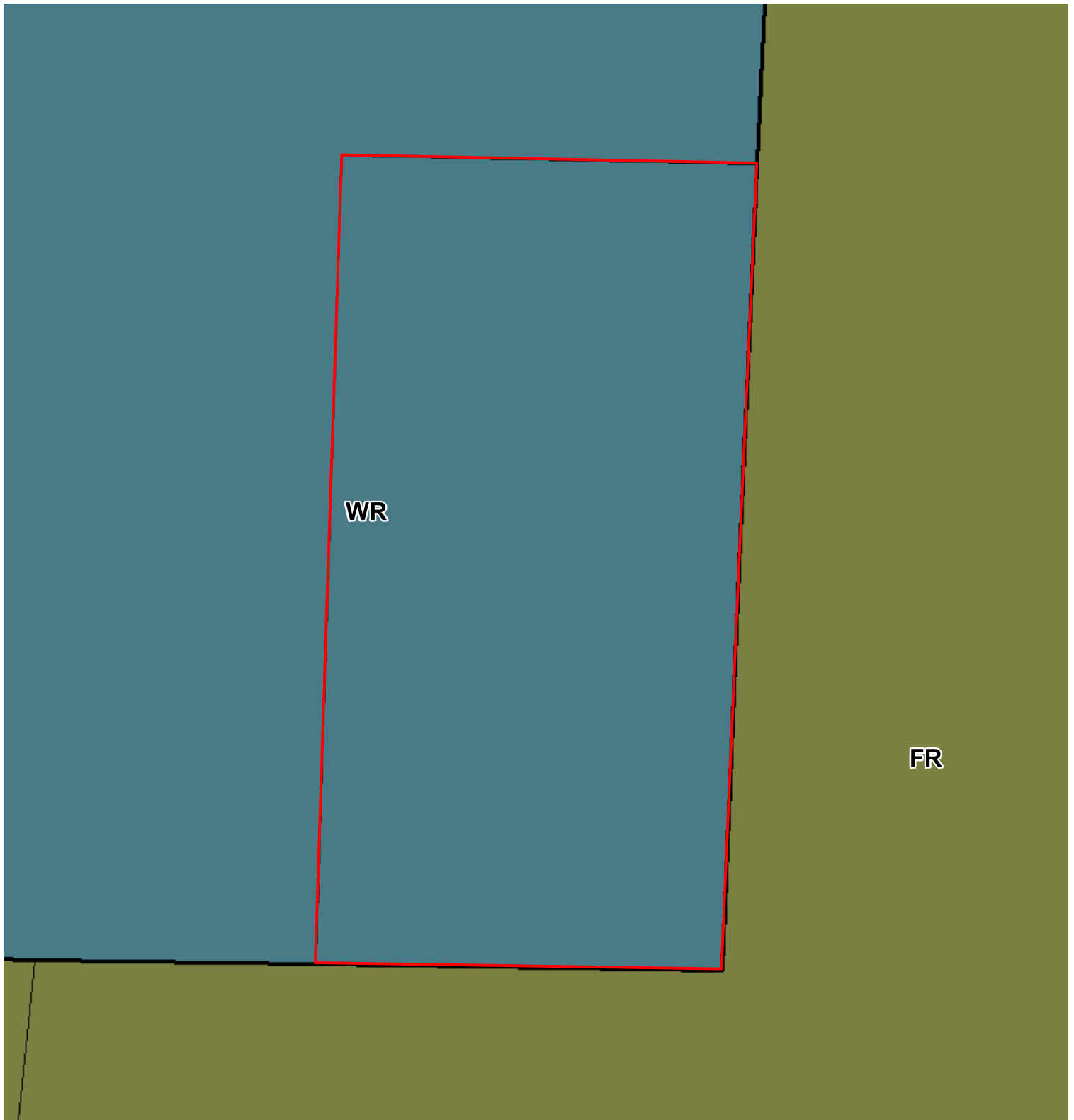
Community

-  High School
-  Middle School
-  Elementary School
-  Water Feature
-  Health Care
-  Fire Station
-  Library
-  City Limits
-  Parks



First American Title

10217911
Elk Cr Rd
Trail, OR 97541



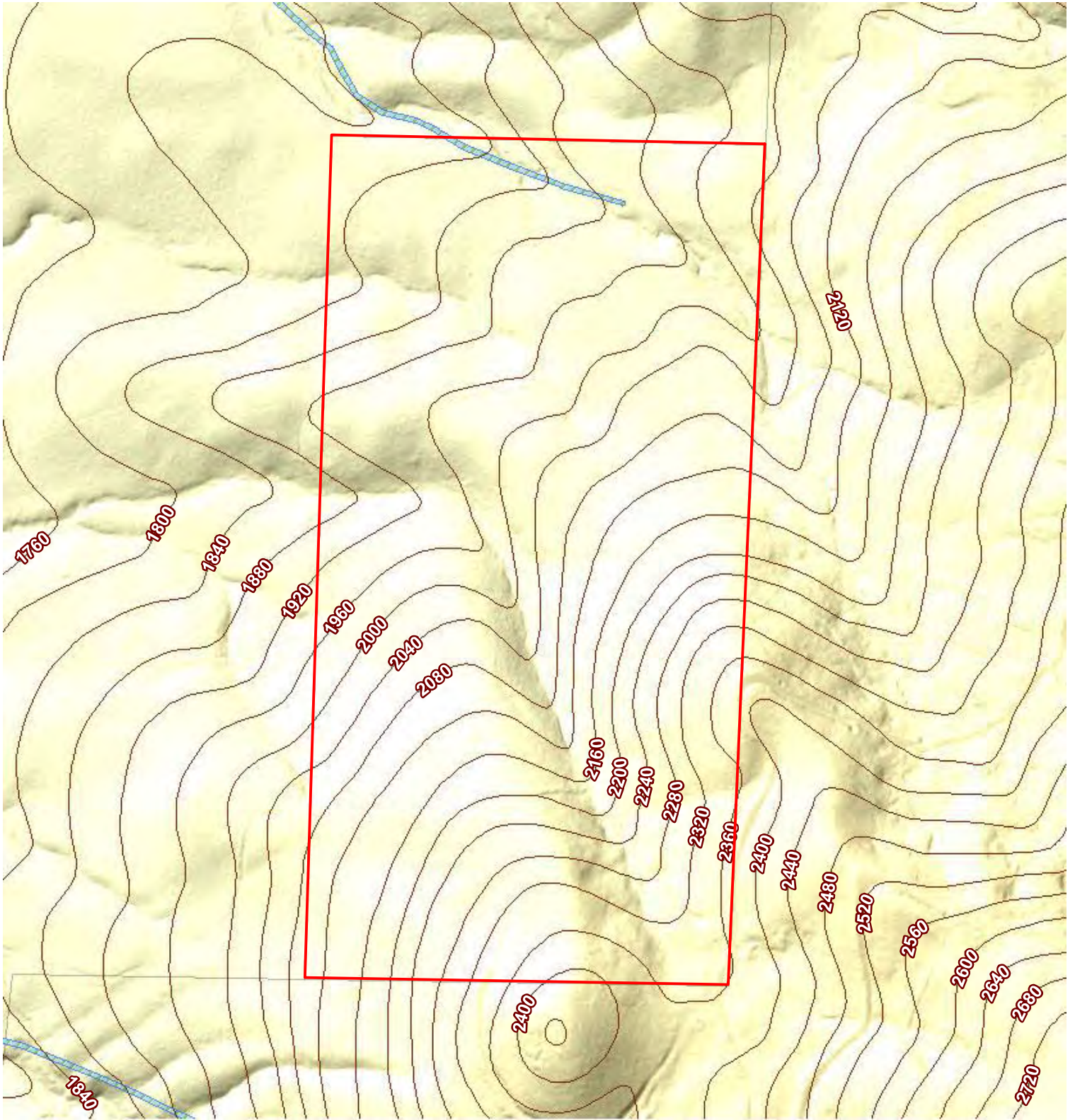
Zoning












Subject

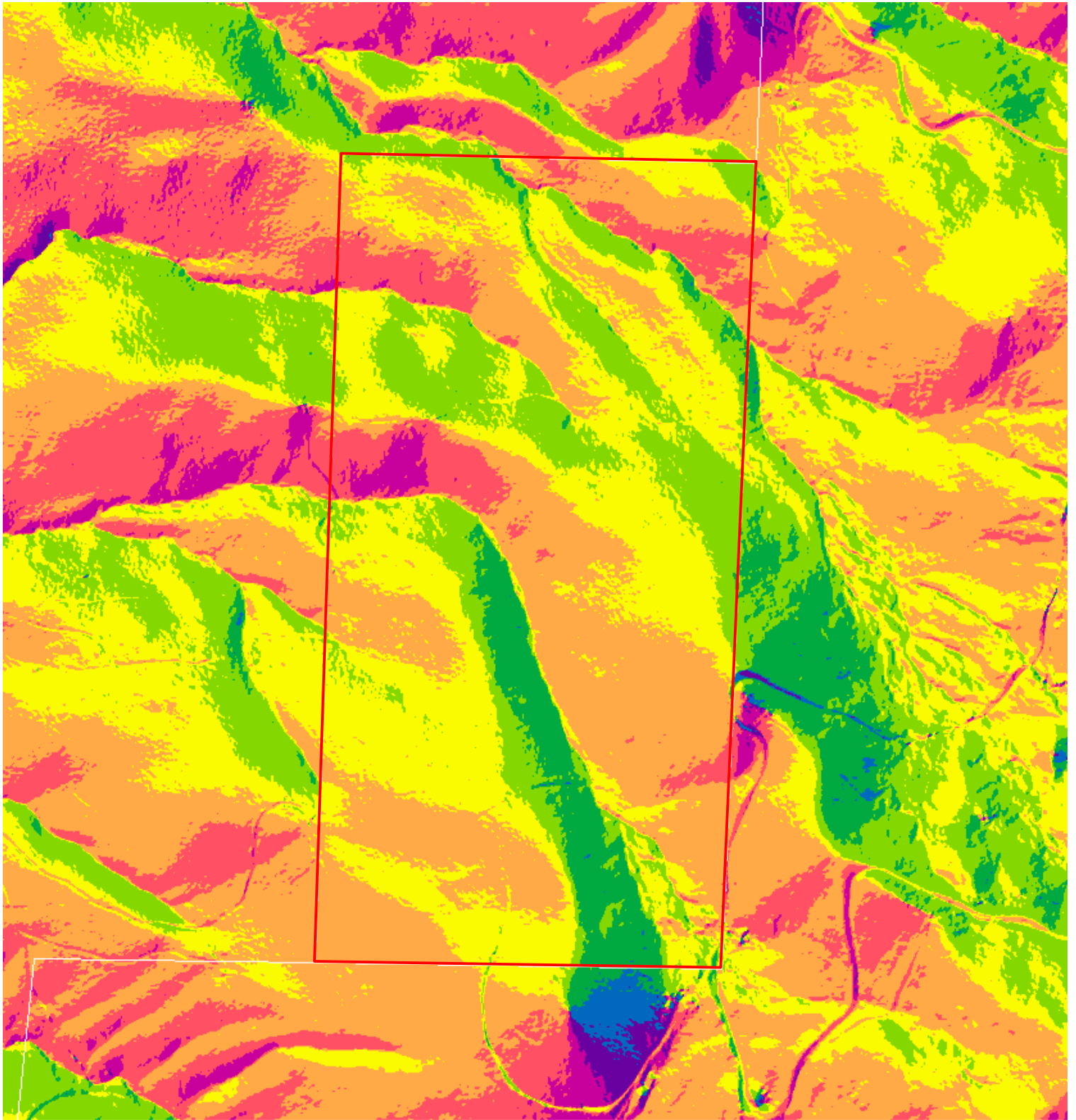


Taxlot

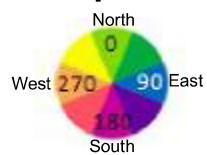


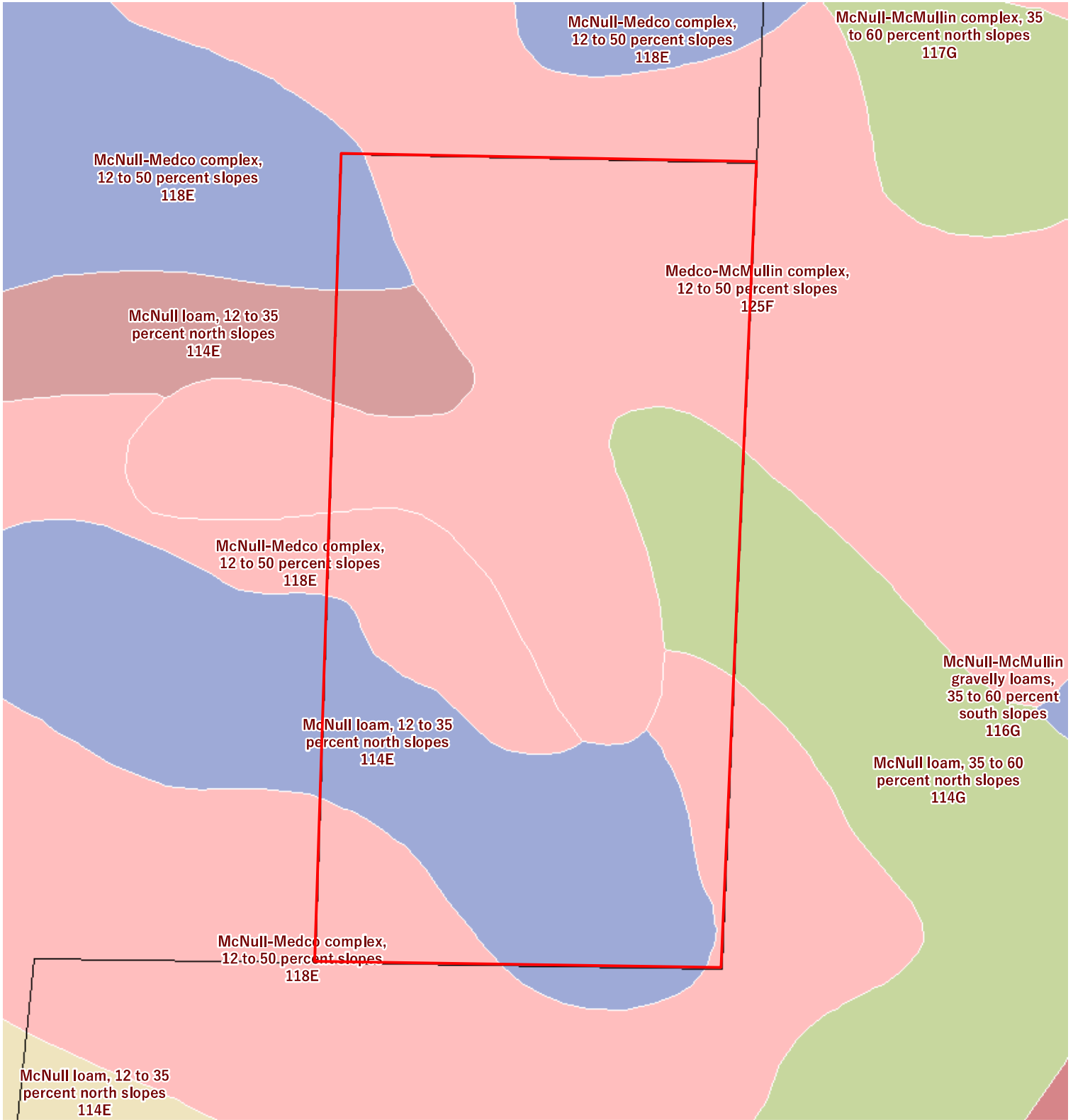
Natural Features

-  Contour
-  1% Annual Chance Flood
-  0.2% Annual Chance Flood
-  Special Floodway
-  Wetlands
-  Area of Undetermined Flood
-  Regulatory Floodway
-  Area with Reduced Risk Due to Levee
-  Future Conditions 1% Annual Chance Flood Hazard



Aspect





Soil



Subject



Taxlot



mapbox

Boundary