

ABSTRACT REFERENCE
 WITHIN ASSAULT CORPORATION
 NUMBER - 77333
 LIST DATED - NOVEMBER 22, 1886

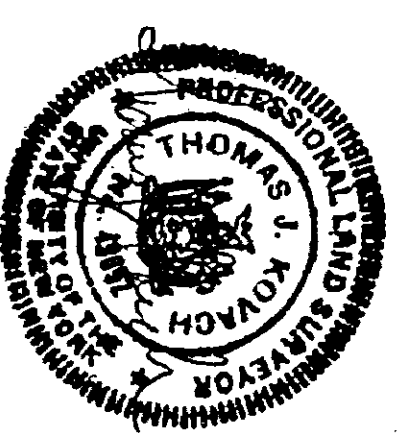
DEED REFERENCE
 PATENT J. MORSE
 TO - EARL G. & EVELYN D. MORSE
 RECORDED IN THE DISTRICT OF COLUMBIA
 BOOK - 809, PAGE - 185
 MAP WAS OBTAINED FROM THE NEW YORK STATE OFFICE IN ALBANY, NEW YORK

MAP REFERENCE
 MAP OF FREDERICK K. REORGANIZATION AREA
 TO - EARL G. & EVELYN D. MORSE
 RECORDED IN THE DISTRICT OF COLUMBIA
 BOOK - 809, PAGE - 185
 MAP WAS OBTAINED FROM THE NEW YORK STATE OFFICE IN ALBANY, NEW YORK

COURSES ALONG CENTER OF ACCESS ROAD

LINE	DIRECTION	DISTANCE
1	N 81°33'52" W	92.00'
2	N 81°33'52" W	92.00'
3	N 81°33'52" W	92.00'
4	N 81°33'52" W	92.00'
5	N 81°33'52" W	92.00'
6	N 81°33'52" W	92.00'
7	N 81°33'52" W	92.00'
8	N 81°33'52" W	92.00'
9	N 81°33'52" W	92.00'
10	N 81°33'52" W	92.00'
11	N 81°33'52" W	92.00'
12	N 81°33'52" W	92.00'
13	N 81°33'52" W	92.00'
14	N 81°33'52" W	92.00'
15	N 81°33'52" W	92.00'
16	N 81°33'52" W	92.00'
17	N 81°33'52" W	92.00'
18	N 81°33'52" W	92.00'
19	N 81°33'52" W	92.00'
20	N 81°33'52" W	92.00'
21	N 81°33'52" W	92.00'
22	N 81°33'52" W	92.00'
23	N 81°33'52" W	92.00'
24	N 81°33'52" W	92.00'
25	N 81°33'52" W	92.00'
26	N 81°33'52" W	92.00'
27	N 81°33'52" W	92.00'
28	N 81°33'52" W	92.00'
29	N 81°33'52" W	92.00'
30	N 81°33'52" W	92.00'
31	N 81°33'52" W	92.00'
32	N 81°33'52" W	92.00'
33	N 81°33'52" W	92.00'
34	N 81°33'52" W	92.00'
35	N 81°33'52" W	92.00'
36	N 81°33'52" W	92.00'
37	N 81°33'52" W	92.00'
38	N 81°33'52" W	92.00'
39	N 81°33'52" W	92.00'
40	N 81°33'52" W	92.00'
41	N 81°33'52" W	92.00'
42	N 81°33'52" W	92.00'
43	N 81°33'52" W	92.00'
44	N 81°33'52" W	92.00'
45	N 81°33'52" W	92.00'
46	N 81°33'52" W	92.00'
47	N 81°33'52" W	92.00'
48	N 81°33'52" W	92.00'
49	N 81°33'52" W	92.00'
50	N 81°33'52" W	92.00'
51	N 81°33'52" W	92.00'
52	N 81°33'52" W	92.00'
53	N 81°33'52" W	92.00'
54	N 81°33'52" W	92.00'
55	N 81°33'52" W	92.00'
56	N 81°33'52" W	92.00'
57	N 81°33'52" W	92.00'
58	N 81°33'52" W	92.00'
59	N 81°33'52" W	92.00'
60	N 81°33'52" W	92.00'
61	N 81°33'52" W	92.00'
62	N 81°33'52" W	92.00'
63	N 81°33'52" W	92.00'
64	N 81°33'52" W	92.00'
65	N 81°33'52" W	92.00'
66	N 81°33'52" W	92.00'
67	N 81°33'52" W	92.00'
68	N 81°33'52" W	92.00'
69	N 81°33'52" W	92.00'
70	N 81°33'52" W	92.00'
71	N 81°33'52" W	92.00'
72	N 81°33'52" W	92.00'
73	N 81°33'52" W	92.00'
74	N 81°33'52" W	92.00'
75	N 81°33'52" W	92.00'
76	N 81°33'52" W	92.00'
77	N 81°33'52" W	92.00'
78	N 81°33'52" W	92.00'
79	N 81°33'52" W	92.00'
80	N 81°33'52" W	92.00'
81	N 81°33'52" W	92.00'
82	N 81°33'52" W	92.00'
83	N 81°33'52" W	92.00'
84	N 81°33'52" W	92.00'
85	N 81°33'52" W	92.00'
86	N 81°33'52" W	92.00'
87	N 81°33'52" W	92.00'
88	N 81°33'52" W	92.00'
89	N 81°33'52" W	92.00'
90	N 81°33'52" W	92.00'
91	N 81°33'52" W	92.00'
92	N 81°33'52" W	92.00'
93	N 81°33'52" W	92.00'
94	N 81°33'52" W	92.00'
95	N 81°33'52" W	92.00'
96	N 81°33'52" W	92.00'
97	N 81°33'52" W	92.00'
98	N 81°33'52" W	92.00'
99	N 81°33'52" W	92.00'
100	N 81°33'52" W	92.00'

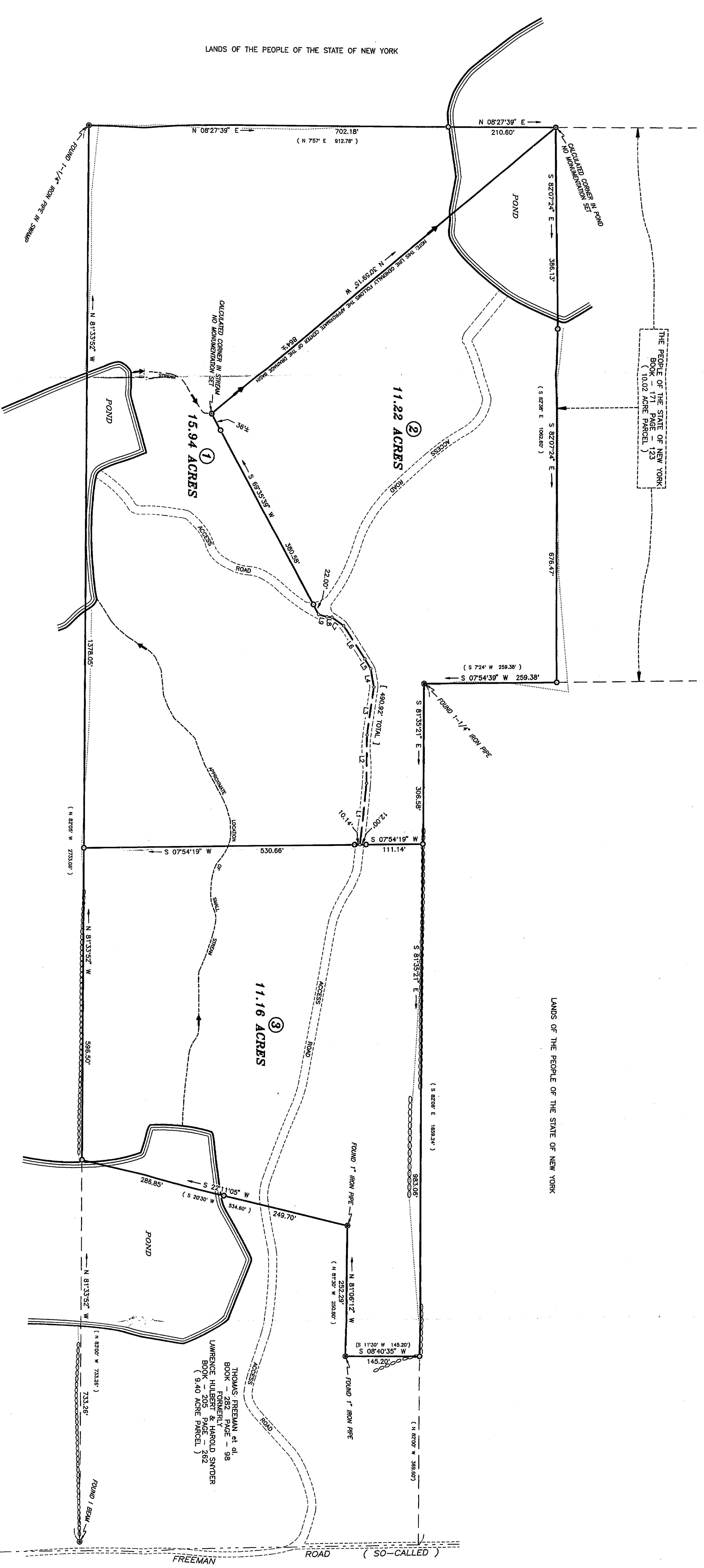
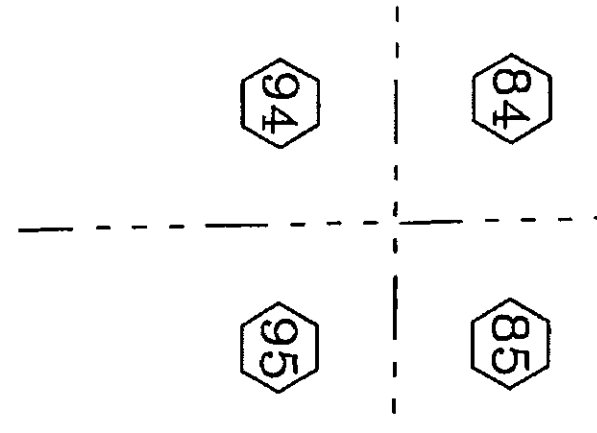
LEGEND
 O DENOTES POINT IN CENTERLINE OF ROAD
 --- DENOTES SUBDIVISION LOT NUMBER
 --- DENOTES APPROXIMATE GREAT LOT LINE
 --- DENOTES FOUND YELLOW PAINTED LOT LINE
 --- DENOTES FOUND YELLOW PAINTED COURSES IN () TAKEN FROM DEEDS AND MAPS



MAP SHOWING -
 DIVISION OF LANDS OF
EARL G. & EVELYN D. MORSE
 IN GREAT LOT 84 - TWP 4 - BOYLSTON'S PURCHASE
 TOWN OF MARTINSBURG - LEWIS COUNTY - NEW YORK
 SCALE - 1" = 100'

DECEMBER 1, 1987
 EARL G. & EVELYN D. MORSE
 PROFESSIONAL LAND SURVEYORS
 1115 N. 2ND ST.
 BAHAMINGHAM, NEW YORK 13812
 (518) 346-8082

DRAWING NO. 861085-1
 COPYRIGHT © 1987 THOMAS J. KOVACH. ALL RIGHTS RESERVED



Task Parcel 271-01-26