

Fall Mist Ranch
4411 S Highway 5
Mansfield, MO 65704

\$925,000
120± Acres
Wright County



MORE INFO ONLINE:

1

<https://livingthedreamland.com/>



Fall Mist Ranch
Mansfield, MO / Wright County

SUMMARY

Address

4411 S Highway 5

City, State Zip

Mansfield, MO 65704

County

Wright County

Type

Farms, Hunting Land, Recreational Land, Residential Property

Latitude / Longitude

37.2108 / -92.5351

Dwelling Square Feet

3472

Bedrooms / Bathrooms

4 / 3

Acreage

120

Price

\$925,000

Property Website

<https://livingthedreamland.com/property/fall-mist-ranch-wright-missouri/50056/>



MORE INFO ONLINE:

<https://livingthedreamland.com/>



PROPERTY DESCRIPTION

Nestled on 120 acres of rich history and natural beauty, Fall Mist Ranch tells a captivating tale that spans centuries. The Osage Nation first settled this land, leaving behind artifacts like hidden treasures throughout the property. The relocation of the Indians and the settling of Europeans brought with it a new era. The first Wright County Courthouse was constructed on the hilltop and the land saw the birth of the first Highway 5, as progress threaded its way through the heart of Missouri. Amidst the global turmoil of the 1940s, as war swept across the world, this land played a crucial role in supporting wartime efforts, witnessing the clearcutting of its majestic hardwood timber to supply the essential materials for the production of military supplies. The echoes of industry and sacrifice linger in the soil, adding depth to the property's narrative. Today, the landscape has transformed into a harmonious blend of 120 acres featuring mixed pasture and mature hardwood timber. Fall Mist Ranch boasts an intricate network of nine miles of trails, winding through the enchanting terrain. Whether walking or riding a horse, you will be taken to another world filled with Morel mushrooms in the spring, chanterelles in the summer, and colorful fall leaves as the season changes. Numerous springs and a large spring-fed pond add to the allure, creating a serene atmosphere that feels connected to the very essence of the land. At the heart of it all stands a remarkable custom-built lodge, a modern testament to the storied past of Fall Mist Ranch. Upon arrival you're greeted by a stunning wrap-around porch, where a hand-carved oak wood door extends a warm invitation, ushering you into a space adorned with high tongue-and-groove vaulted ceilings and walls dressed in yellow pine logs. A towering stone wood-burning fireplace anchors the room, imparting both warmth and character, serving as a captivating focal point for intimate gatherings. The kitchen is a chef's dream. A rustic Buck stove sits in the corner complemented by a gorgeous stone wall and custom yellow pine cabinets, seamlessly blending functionality with aesthetic appeal. At the kitchen's heart, a 4x6ft walnut butcher block island steals the spotlight, concealing two large pull-out drawers for your appliances and boasting a Jenna Air stove/convection oven with a griddle and grill, perfect for sizzling steaks in any weather. Enjoy additional convenience with pull-out shelves in the pantry and lower cabinets, complemented by two Lazy Susan cabinets. Off the kitchen, a dining nook overlooks the Endless Pool that glistens in the summer sun. Hidden from the outside world behind a canvas of trees, you can sunbath and skinny dip in the cool blue water. Engage in a unique swimming experience by activating the pool's motor, propelling you against a current of rushing water while maintaining a stationary position – a captivating aquatic escape. Two bedrooms and two bathrooms grace the main level of the lodge offering convenience and relaxation. Unwind in the guest bath, adorned with a live edge countertop and antique clawfoot tub, or refresh yourself with a shower under the French shower head. The grand master suite features a jetted tub, a separate shower with a bench, and a spacious walk-in closet with custom built-in chest of drawers providing added charm and convenience. Descending to the lower level, custom live edge stairs take you down to the walkout basement, where you're greeted by a stunning view out of the French doors, where you can glimpse the occasional visit from deer seeking an afternoon snack beneath the large oak trees. A non-conforming bedroom/ office as well as a bathroom and two additional bedrooms grace the bottom level, both boasting custom built-in chest of drawer storage similar to the master suite. The charm of Fall Mist Ranch extends beyond the home, featuring a large 80x80 barn with an inside riding arena equipped with overhead lighting, water, 5 stalls with pull-out feeders, and a tack and workshop area. For all of your equipment storage needs, a 10x80 side lean two is perfect for your horse trailer, tractor, and lawn mower. The foundation of the old Wright County Courthouse hosts a guest cabin in progress, a unique blend of past and present, while a 15x40 milk barn stands proudly in the pasture, a nod to Missouri's rich history in dairy farming and adding a touch of nostalgia. Fall Mist Ranch is more than a residence; it's a living canvas, painted with the strokes of history, nature, and the passage of time. Explore its trails, breathe in its stories, and make this enchanting piece of the past your own.

MORE INFO ONLINE:

<https://livingthedreamland.com/>



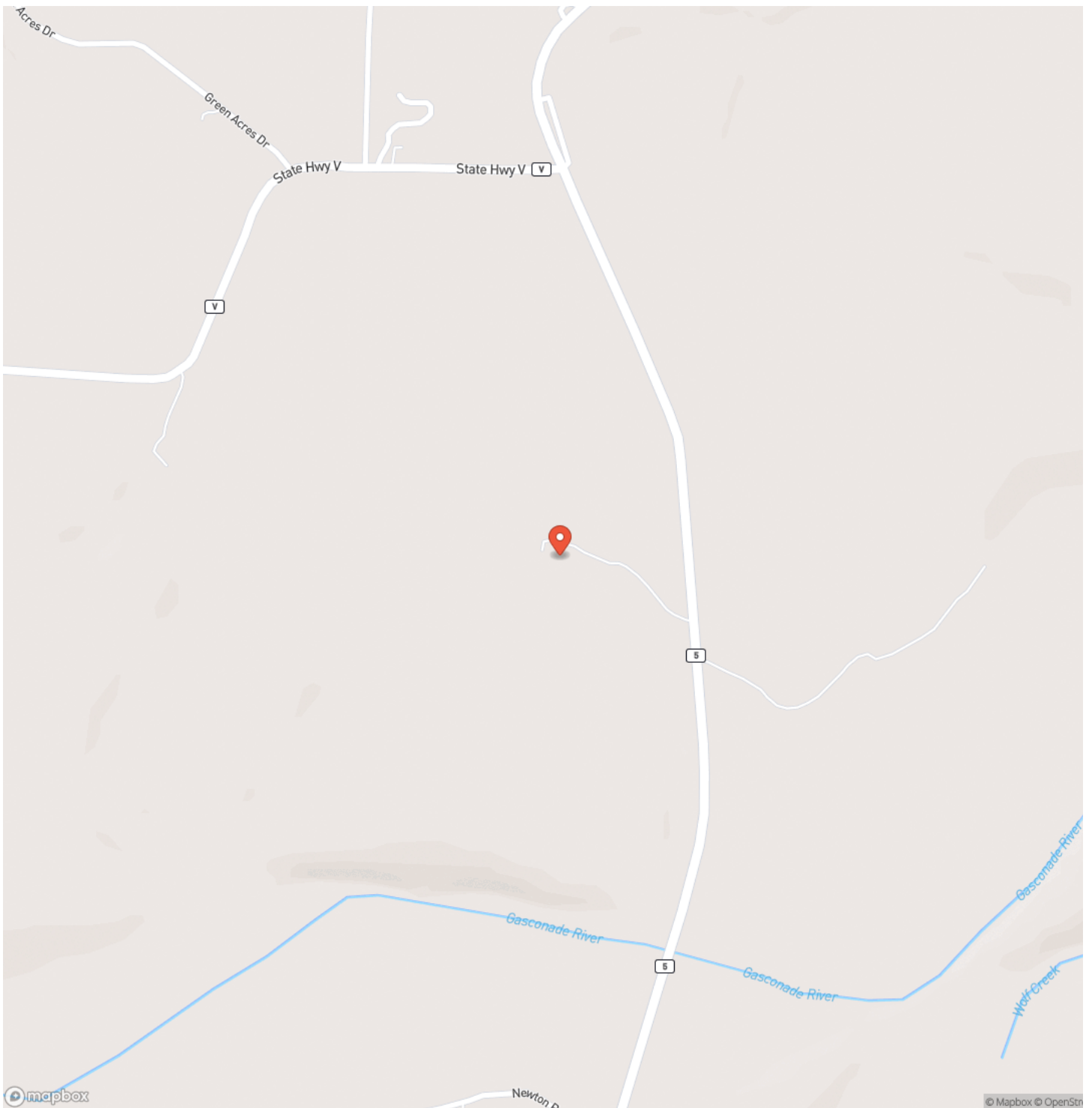
Fall Mist Ranch
Mansfield, MO / Wright County



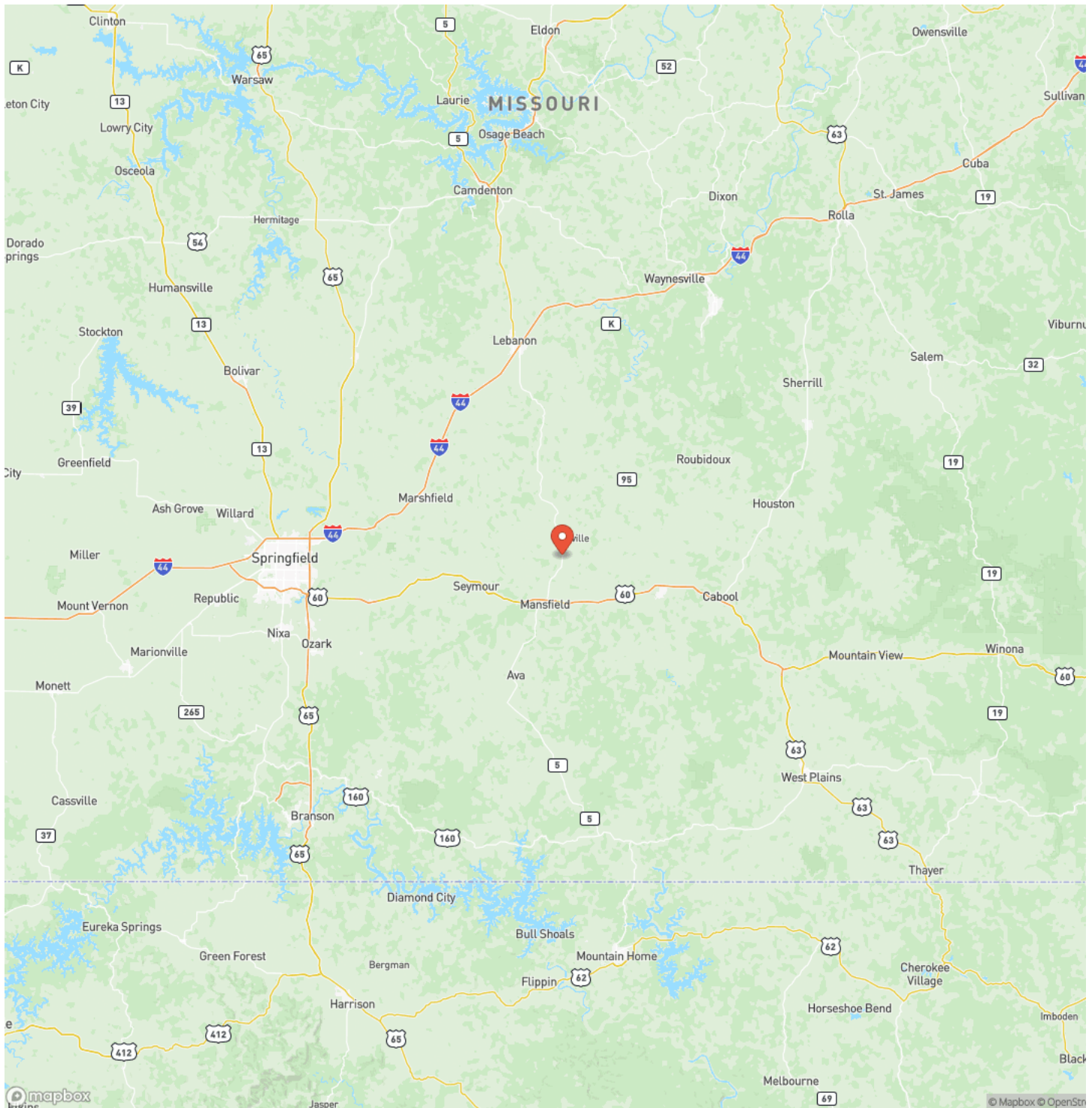
MORE INFO ONLINE:

<https://livingthedreamland.com/>

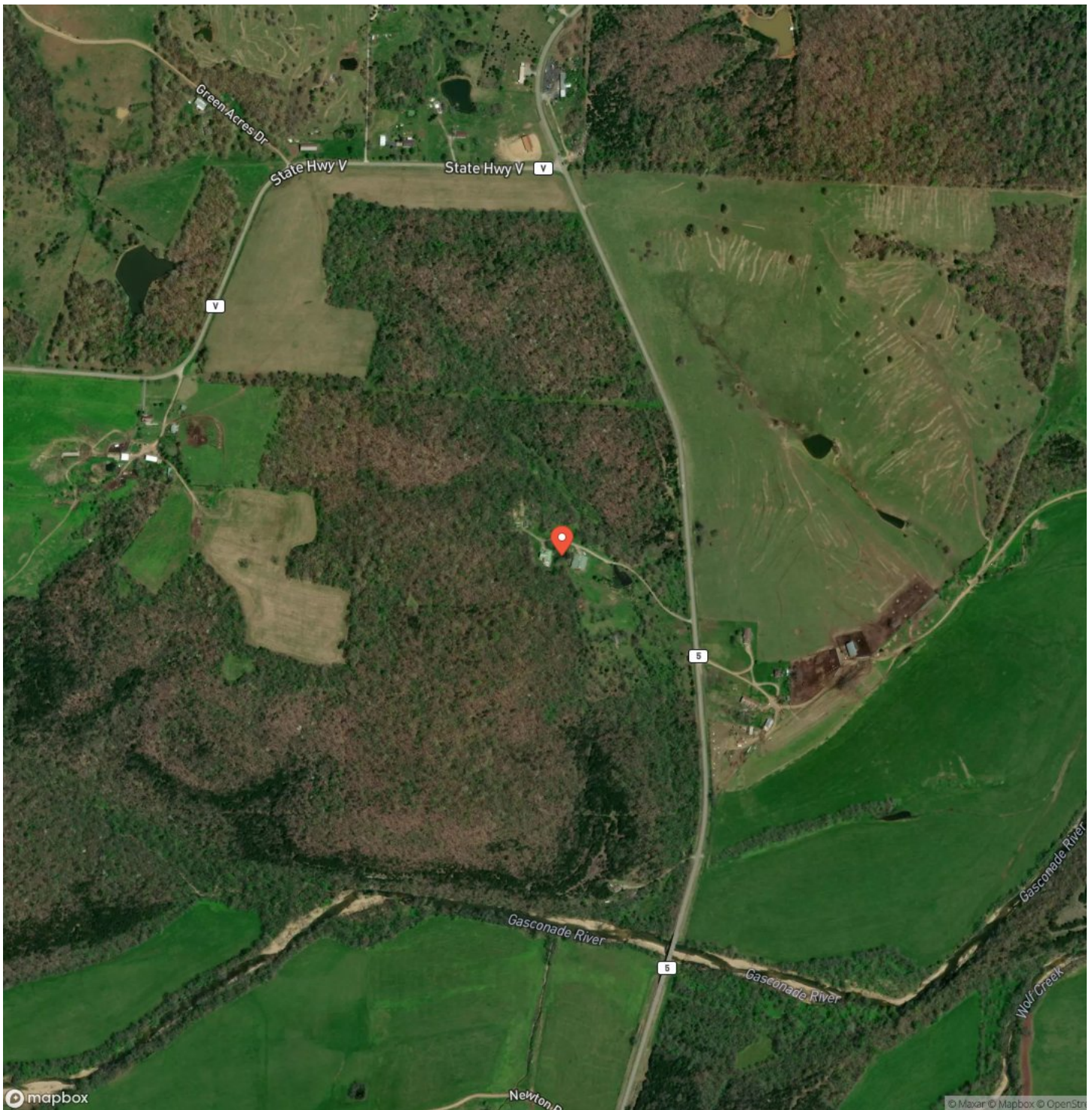
Locator Map



Locator Map



Satellite Map



Fall Mist Ranch
Mansfield, MO / Wright County

LISTING REPRESENTATIVE

For more information contact:



Representative

Amanda Robertson

Mobile

(417) 322-0971

Email

amanda@livingthedreamland.com

Address

515 S. Franklin St.

City / State / Zip

Summersville, MO 65453

NOTES

[illegible]

MORE INFO ONLINE:

<https://livingthedreamland.com/>

[illegible]

DISCLAIMERS

Information in this brochure is provided solely for information purposes and does not constitute an offer to sell or advertise real estate outside the states in which broker or agent licensed. The information presented has been obtained from sources deemed to be reliable, but is not guaranteed or warranted by the agent, broker, or the sellers of these properties. This offering is subject to errors, omissions, prior sale, price change, correction or withdrawal from the market without notice. All references to age, square footage, income, expenses, acreage, carrying capacity, and land classification, etc. are approximate. Prospective buyers are chargeable with and expected to conduct their own independent investigation of the information and the property and to rely only on those results. Sellers reserve the right to accept or reject any and all offers without liability to any buyer or cooperating broker.

Maps are provided for illustration purposes only, the accuracy is not warranted. Parcels on interactive maps are not adjusted to match aerial backgrounds. This information is for reference purposes only and is not a legal document. Data maps contain errors. The seller and seller's agent are making known to all potential buyers that there may be variations between the location of the existing fence lines and the legal description of the deeded property. Seller and seller's agent make no warranties with regard to the location of the fence lines in relationship to the deeded property lines, nor does the Seller make any warranties or representations with regard to the specific acreage contained within the fenced property lines. Seller is selling the property in an "as is" condition, which includes the location of the fences as they exist. Boundaries shown on the accompanying maps are approximate, based on county parcel data. The maps are not to scale. The accuracy of the maps is not guaranteed. Prospective buyers are encouraged to verify fence lines, deeded property lines and acreages using a licensed surveyor at their own expense.



Living The Dream Outdoor Properties
6484 North Service Rd.
Leasburg, MO 65535
(855) 289-3478
<https://livingthedreamland.com/>

