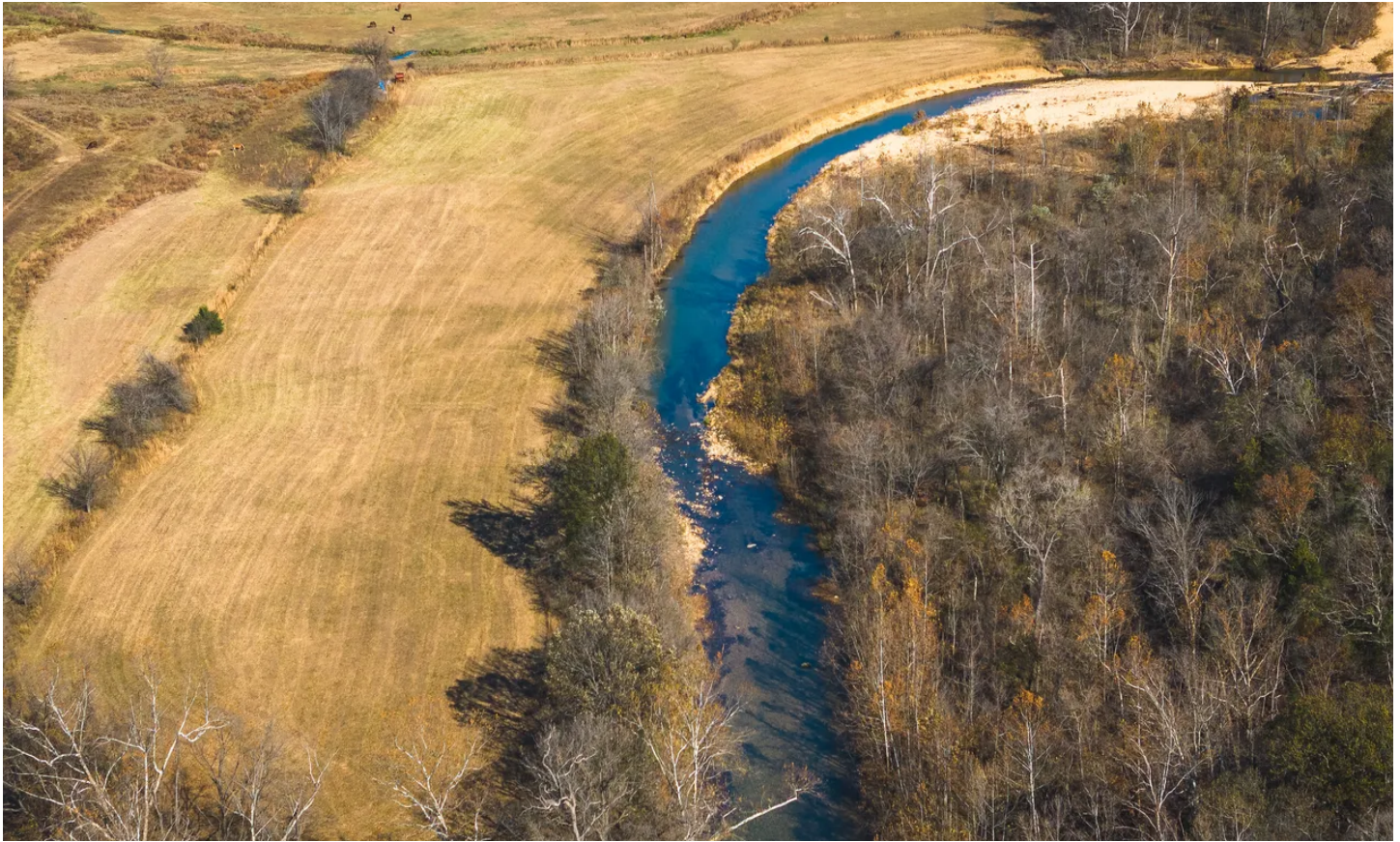


OakWind Farm on the Platin Creek
15050 Hwy T
Festus, MO 63028

\$1,125,000
90± Acres
Jefferson County



MORE INFO ONLINE:

<https://livingthedreamland.com/>

OakWind Farm on the Plattin Creek
Festus, MO / Jefferson County

SUMMARY

Address

15050 Hwy T

City, State Zip

Festus, MO 63028

County

Jefferson County

Type

Farms, Hunting Land, Recreational Land

Latitude / Longitude

38.08314 / -90.410856

Taxes (Annually)

1357

Acreage

90

Price

\$1,125,000

Property Website

<https://livingthedreamland.com/property/oakwind-farm-on-the-plattin-creek-jefferson-missouri/47800/>



MORE INFO ONLINE:

<https://livingthedreamland.com/>



PROPERTY DESCRIPTION

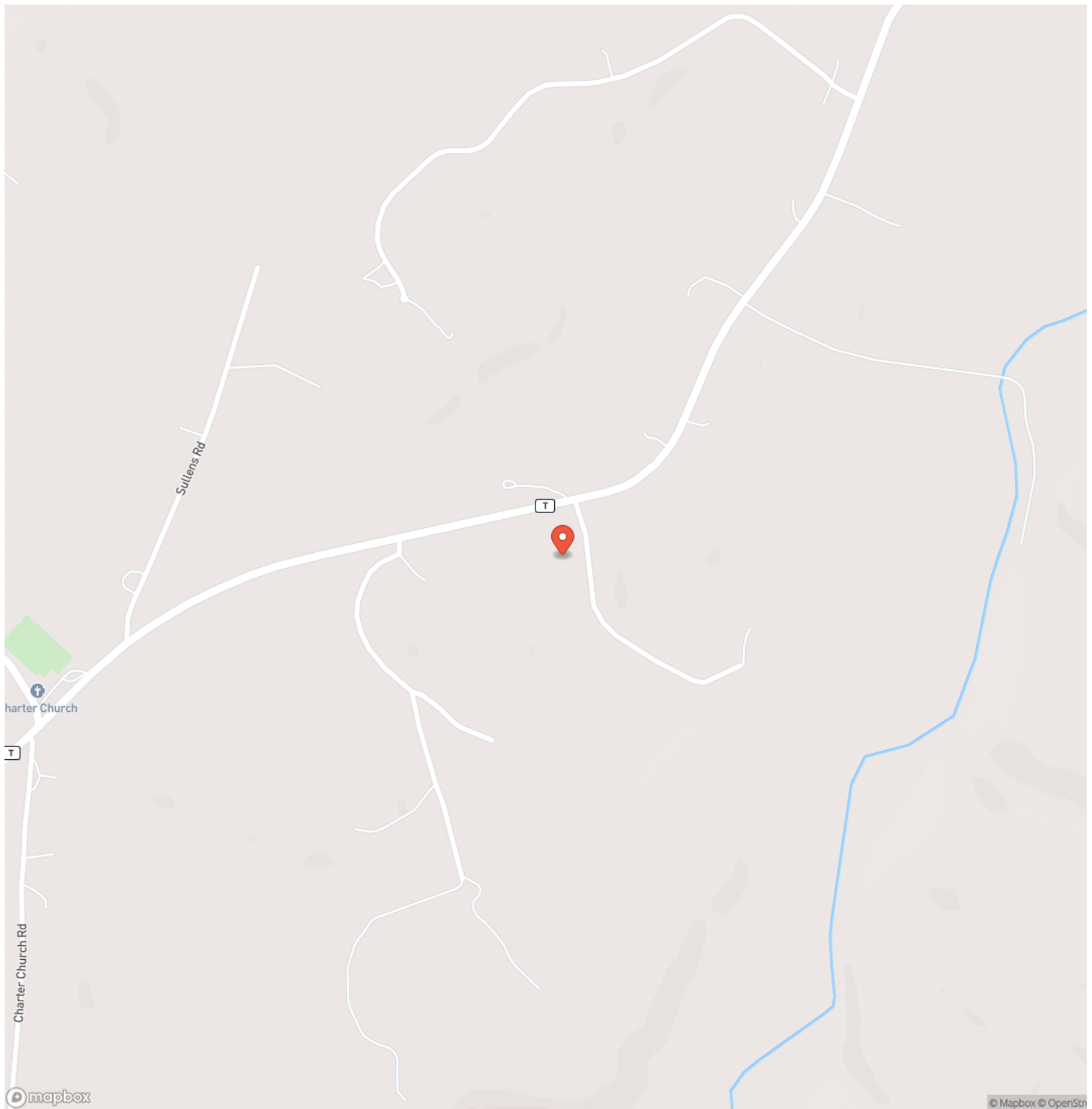
Discover the perfect retreat at this picturesque 90-acre property just minutes from Festus, offering a blend of pastoral charm and natural beauty. The land boasts 50 acres of lush pasture suitable for livestock or hay production, complemented by 40 acres of mature timber on the ridge top. Enjoy the tranquil Platin Creek, teeming with bass and bluegill, ideal for fishing and leisurely water activities. With flourishing wildlife, including deer, turkeys, and small game, this property is a haven for hunting enthusiasts and nature lovers alike. Consider the potential for a weekend getaway close to St. Louis or the possibility of building your dream home with stunning creek frontage, ensuring a serene escape within easy reach of city amenities.



OakWind Farm on the Plattin Creek
Festus, MO / Jefferson County



Locator Map

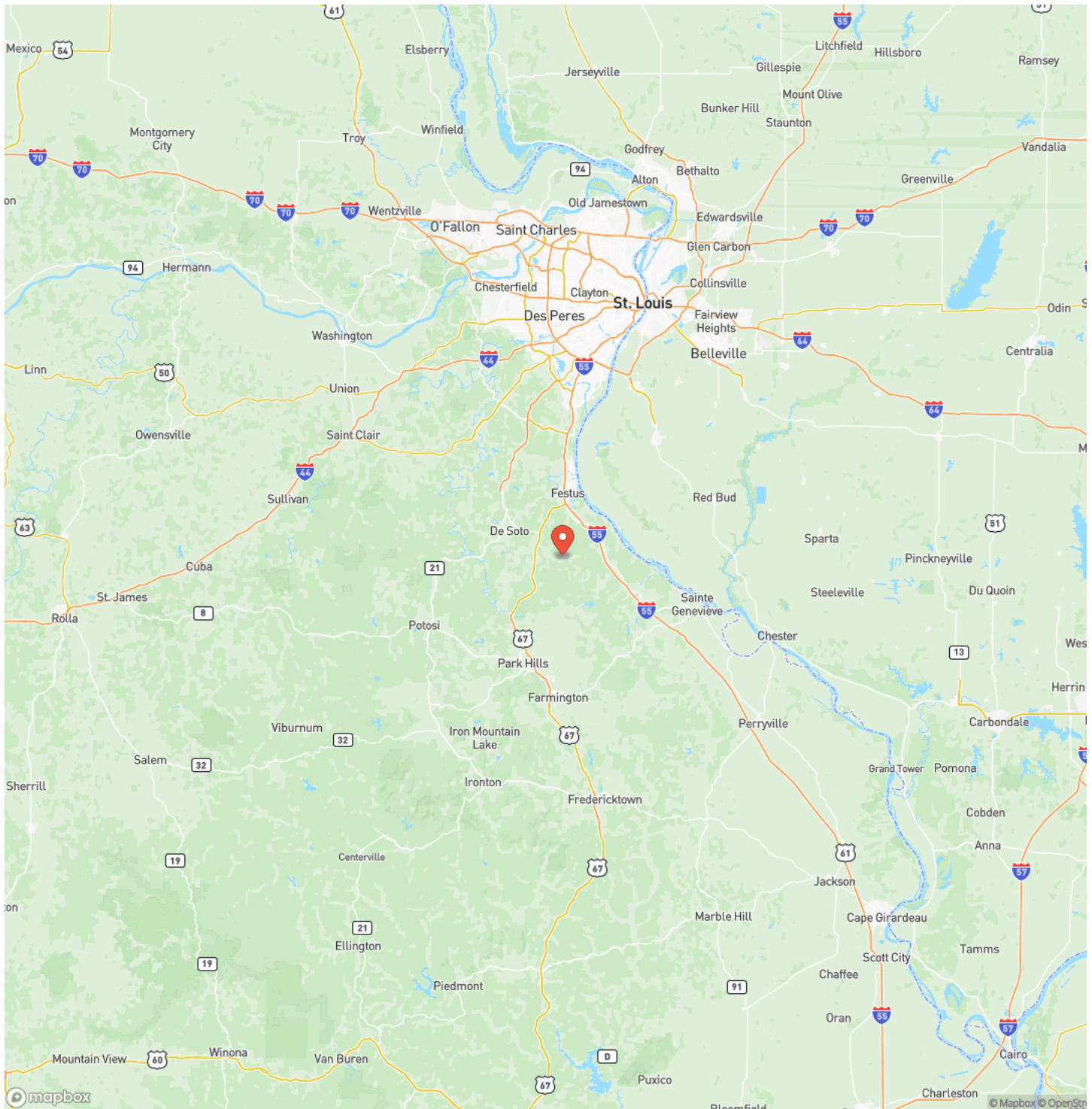


MORE INFO ONLINE:

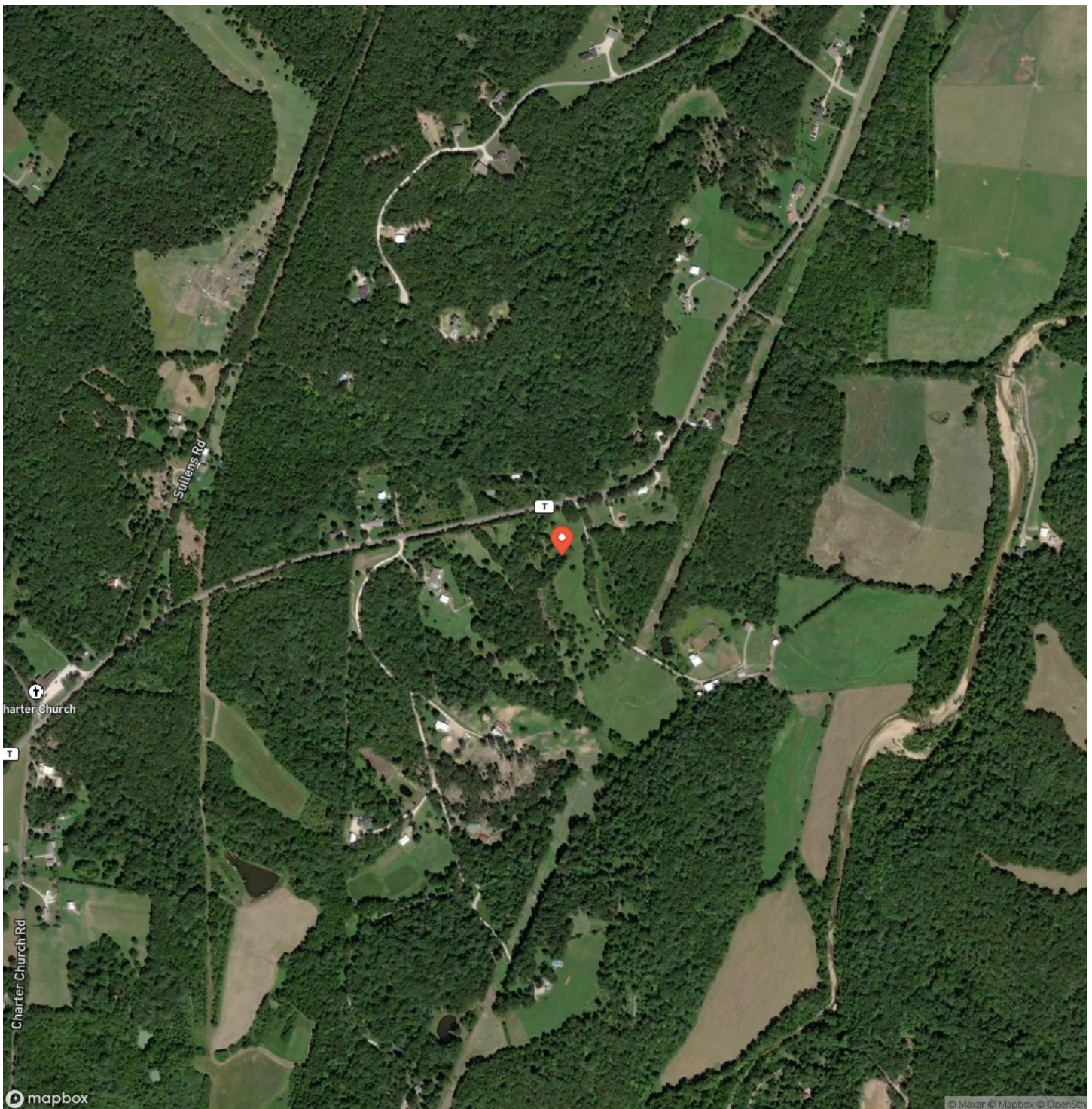
<https://livingthedreamland.com/>



Locator Map



Satellite Map



MORE INFO ONLINE:

<https://livingthedreamland.com/>

This image shows a single sheet of white paper with horizontal blue ruling lines. The lines are evenly spaced and run across the width of the page. There are no margins, text, or other markings on the paper.



DISCLAIMERS

Information in this brochure is provided solely for information purposes and does not constitute an offer to sell or advertise real estate outside the states in which broker or agent licensed. The information presented has been obtained from sources deemed to be reliable, but is not guaranteed or warranted by the agent, broker, or the sellers of these properties. This offering is subject to errors, omissions, prior sale, price change, correction or withdrawal from the market without notice. All references to age, square footage, income, expenses, acreage, carrying capacity, and land classification, etc. are approximate. Prospective buyers are chargeable with and expected to conduct their own independent investigation of the information and the property and to rely only on those results. Sellers reserve the right to accept or reject any and all offers without liability to any buyer or cooperating broker.

Maps are provided for illustration purposes only, the accuracy is not warranted. Parcels on interactive maps are not adjusted to match aerial backgrounds. This information is for reference purposes only and is not a legal document. Data maps contain errors. The seller and seller's agent are making known to all potential buyers that there may be variations between the location of the existing fence lines and the legal description of the deeded property. Seller and seller's agent make no warranties with regard to the location of the fence lines in relationship to the deeded property lines, nor does the Seller make any warranties or representations with regard to the specific acreage contained within the fenced property lines. Seller is selling the property in an "as is" condition, which includes the location of the fences as they exist. Boundaries shown on the accompanying maps are approximate, based on county parcel data. The maps are not to scale. The accuracy of the maps is not guaranteed. Prospective buyers are encouraged to verify fence lines, deeded property lines and acreages using a licensed surveyor at their own expense.



Living The Dream Outdoor Properties
100 Chesterfield Parkway
Chesterfield, MO 63005
(855) 289-3478
<https://livingthedreamland.com/>

