

Little Boston mountain hideaway
000 Madison 3370
Witter, AR 72776

\$108,500
30± Acres
Madison County



MORE INFO ONLINE:

<https://livingthedreamland.com/>

Little Boston mountain hideaway
Witter, AR / Madison County

SUMMARY

Address

000 Madison 3370

City, State Zip

Witter, AR 72776

County

Madison County

Type

Hunting Land, Recreational Land

Latitude / Longitude

35.9172 / -93.6447

Acreage

30

Price

\$108,500

Property Website

<https://livingthedreamland.com/property/little-boston-mountain-hideaway-madison-arkansas/41427/>



MORE INFO ONLINE:

<https://livingthedreamland.com/>



Little Boston mountain hideaway

Witter, AR / Madison County

PROPERTY DESCRIPTION

Deep inside the Boston Mountain region of the ozarks lies this secluded 30 acre tract of privacy and seclusion. This property offers great black bear and deer habitat ranging from mature hardwood timber to small open thickets and everything in between. You will also find county road frontage, a wet weather creek and a nice trail system to meet your recreational needs. Views of the adjacent ridges are cons in the winter and obtainable in the summer months with some trimming. Several nice cabin locations exist from right along the road to c in the holler. Electricity exists on adjacent neighboring properties to the north, east and south. Less than 20 minutes from Huntsville and hour from Springdale. Don't miss your chance at this secluded getaway deep in the Ozarks.



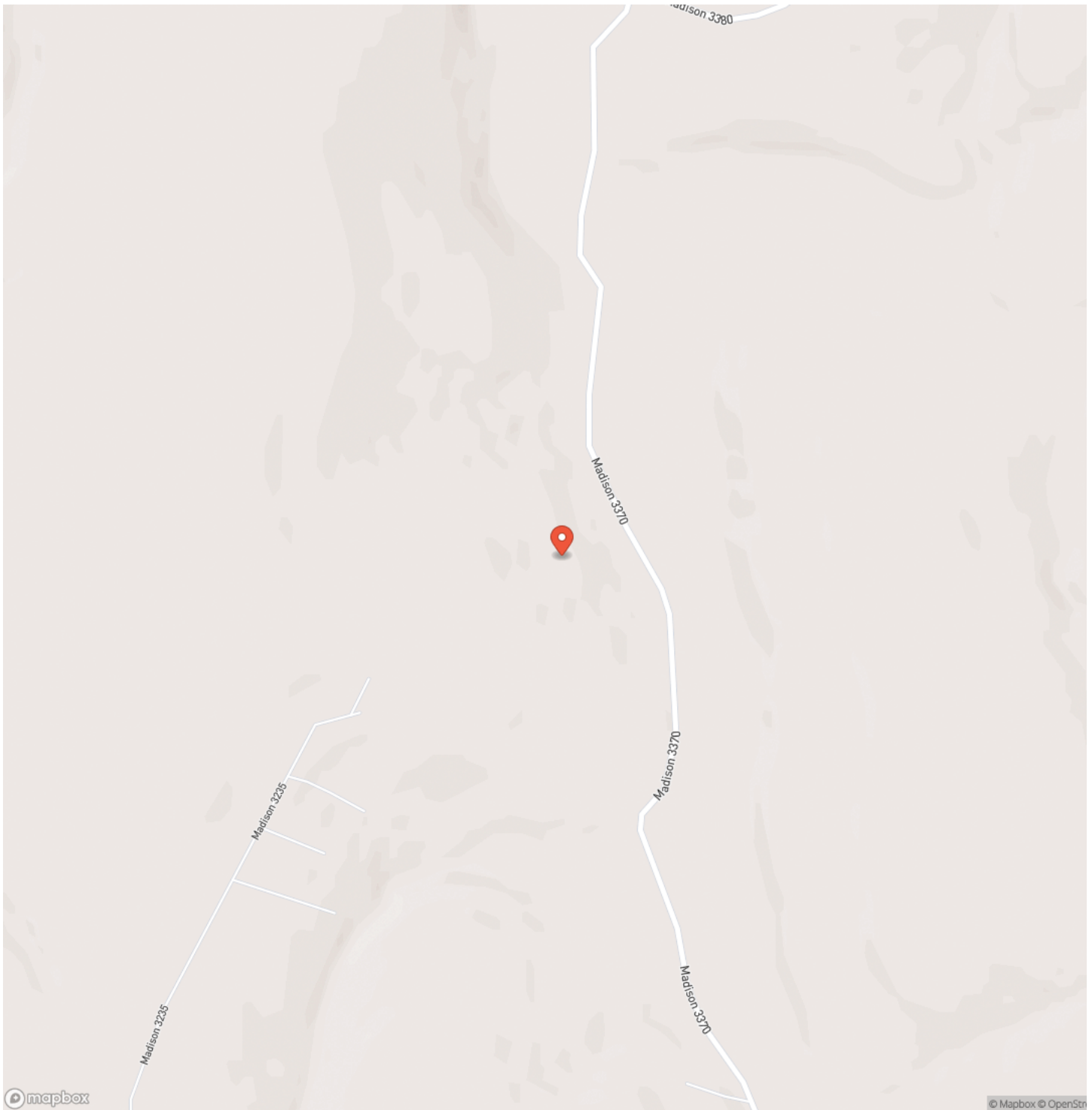
Little Boston mountain hideaway
Witter, AR / Madison County



MORE INFO ONLINE:

<https://livingthedreamland.com/>

Locator Map

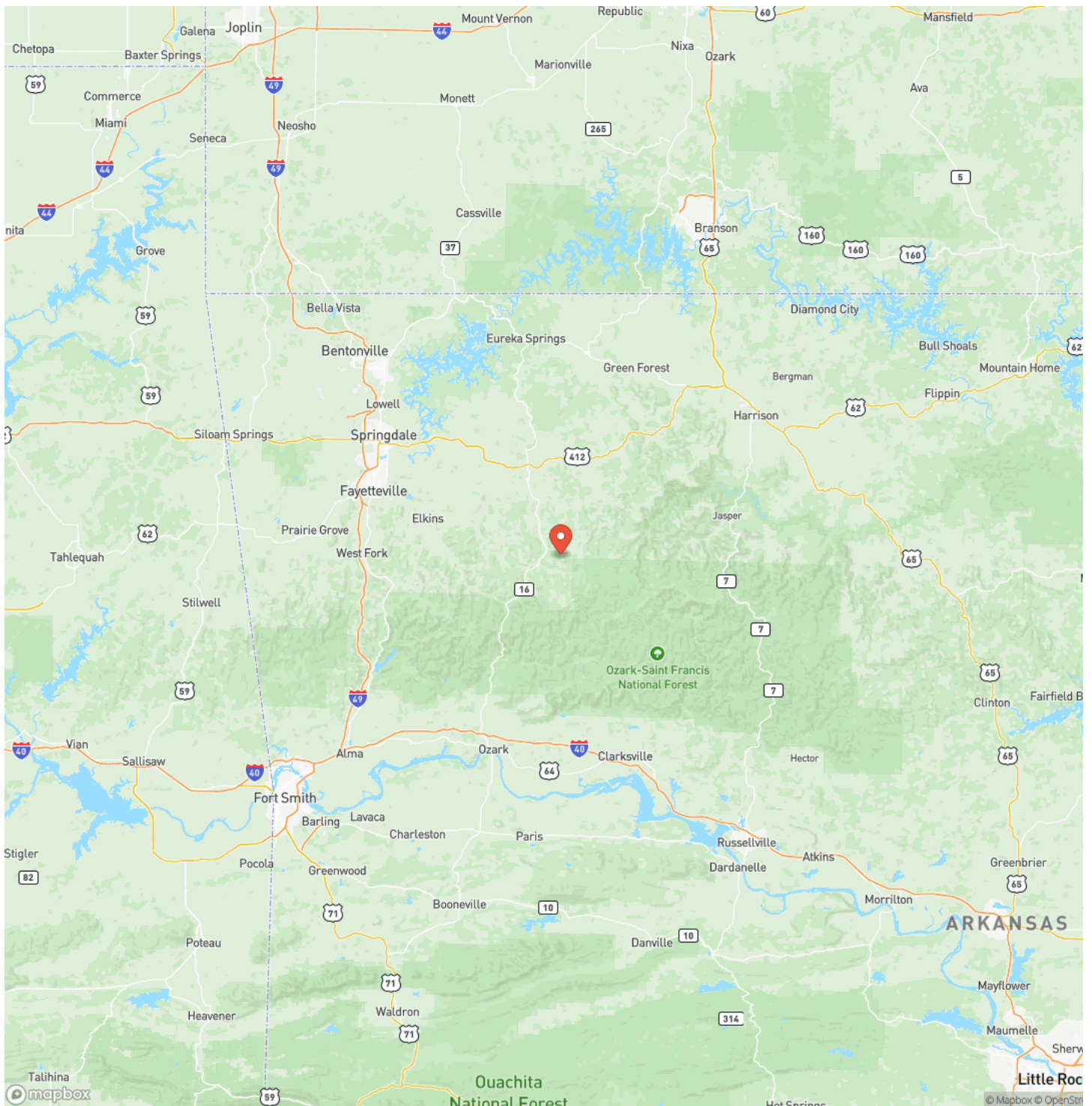


MORE INFO ONLINE:

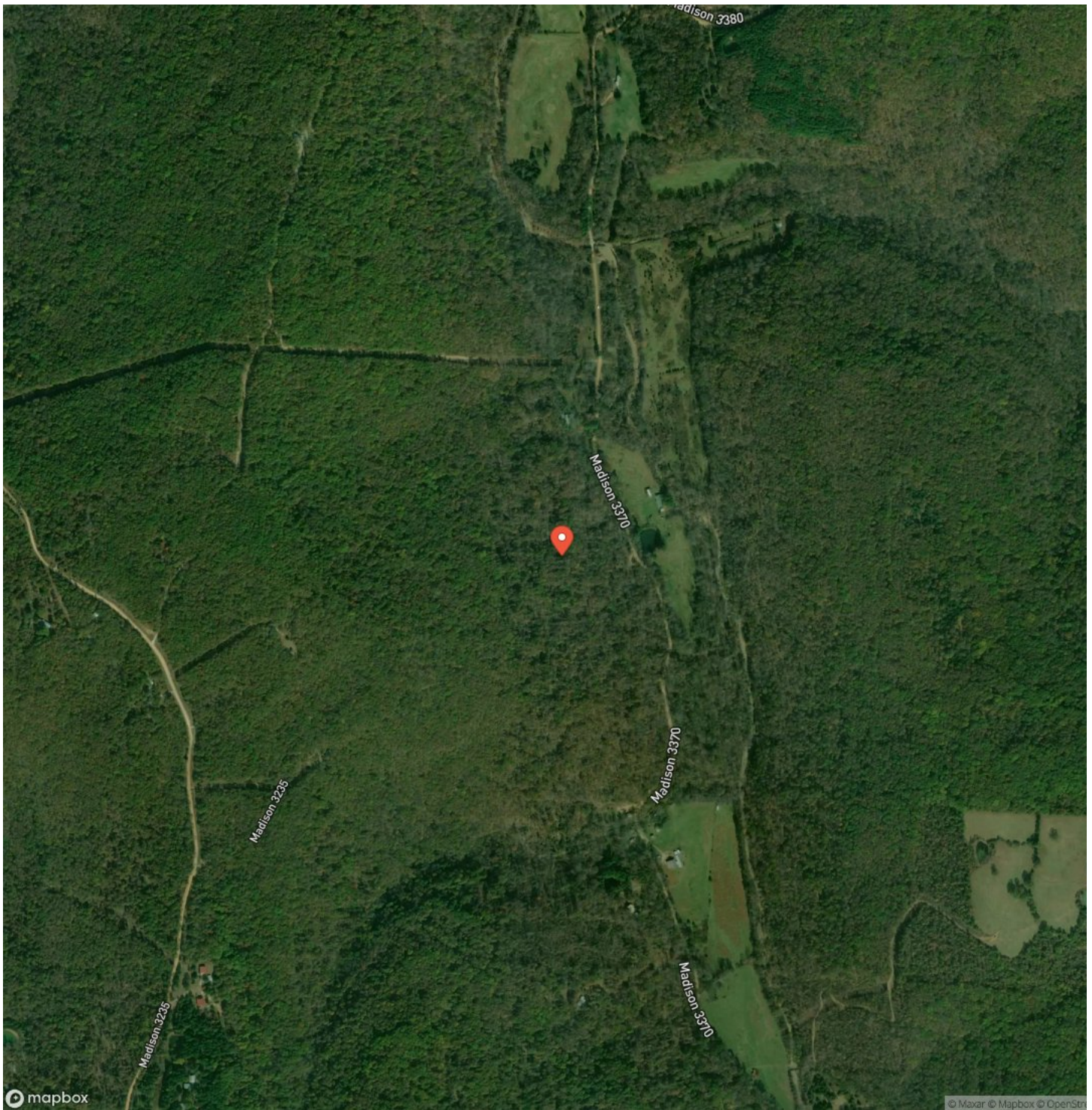
<https://livingthedreamland.com/>



Locator Map



Satellite Map



Little Boston mountain hideaway

Witter, AR / Madison County

LISTING REPRESENTATIVE

For more information contact:



Representative

Ryan Harris

Mobile

(405) 990-4889

Office

(405) 990-4889

Email

ryanharris@livingthedreamland.com

Address

City / State / Zip

Rogers, AR 72756

NOTES



MORE INFO ONLINE:

<https://livingthedreamland.com/>

This image shows a single sheet of white paper with horizontal blue ruling lines. The lines are evenly spaced and run across the width of the page. There are no margins, text, or other markings on the paper.



DISCLAIMERS

Information in this brochure is provided solely for information purposes and does not constitute an offer to sell or advertise real estate outside the states in which broker or agent licensed. The information presented has been obtained from sources deemed to be reliable, is not guaranteed or warranted by the agent, broker, or the sellers of these properties. This offering is subject to errors, omissions, prior sale, price change, correction or withdrawal from the market without notice. All references to age, square footage, income, expenses, acreage, carrying capacity, and land classification, etc. are approximate. Prospective buyers are chargeable with and expected to conduct their own independent investigation of the information and the property and to rely only on those results. Sellers reserve the right to accept or reject any and all offers without liability to any buyer or cooperating broker.

Maps are provided for illustration purposes only, the accuracy is not warranted. Parcels on interactive maps are not adjusted to match aerial backgrounds. This information is for reference purposes only and is not a legal document. Data maps contain errors. The seller and seller's agent are making known to all potential buyers that there may be variations between the location of the existing fence lines and the legal description of the deeded property. Seller and seller's agent make no warranties with regard to the location of the fence lines in relation to the deeded property lines, nor does the Seller make any warranties or representations with regard to the specific acreage contained within the fenced property lines. Seller is selling the property in an "as is" condition, which includes the location of the fences as they exist. Boundaries shown on the accompanying maps are approximate, based on county parcel data. The maps are not to scale. The accuracy of the maps is not guaranteed. Prospective buyers are encouraged to verify fence lines, deeded property lines and acreages using a licensed surveyor at their own expense.



Living The Dream Outdoor Properties

515 S. Franklin St

Cuba, MO 65453

(855) 289-3478

<https://livingthedreamland.com/>

MORE INFO ONLINE:

<https://livingthedreamland.com/>

